



# 11 Elm Close

Rossington, Doncaster, DN11 0YH

Price Guide £240,000

GUIDE PRICE - £240,000 - £250,000

Set on this Corner Plot in the sought after location of Rossington is this stunning Three Bedroom Detached Family Home offering spacious Accommodation throughout. Close to all local amenities including local primary & secondary school. From the Entrance hall is the Lounge. The Impressive Dining Kitchen with integrated appliances leads into the Conservatory with Air conditioning & heater, opening out onto the enclosed rear garden with decked area and lawned garden. Off the Hallway is a WC/Cloakroom. Stairs lead to the first floor landing. Stunning master bedroom and en-suite shower room. Bedrooms 2 and 3. Modern Family Bathroom. Externally is a driveway providing ample parking leading to the detached garage and rear garden.

- Immaculately Presented
- Spacious 3 Bedroom Detached
- Sought after Location
- Dining Kitchen
- Conservatory
- Generous Size Bedrooms
- Larger Master Bedroom with En-suite
- Family Bathroom
- Detached Garage
- Cul-de-Sac position

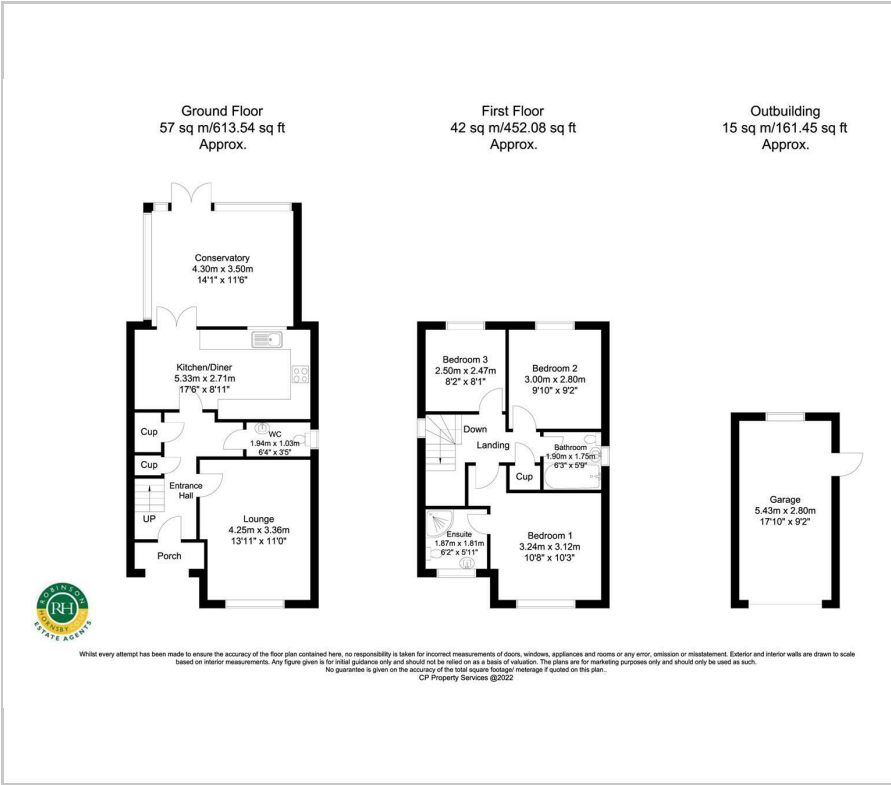
## Viewing

Please contact our Office on 01302 751616 if you wish to arrange a viewing appointment for this property or require further information.





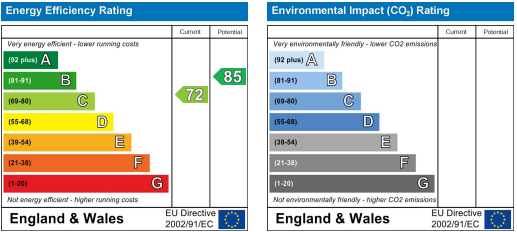
Floor Plan



Area Map



Energy Efficiency Graph



These particulars, whilst believed to be accurate are set out as a general outline only for guidance and do not constitute any part of an offer or contract. Intending purchasers should not rely on them as statements of representation of fact, but must satisfy themselves by inspection or otherwise as to their accuracy. No person in this firms employment has the authority to make or give any representation or warranty in respect of the property.